

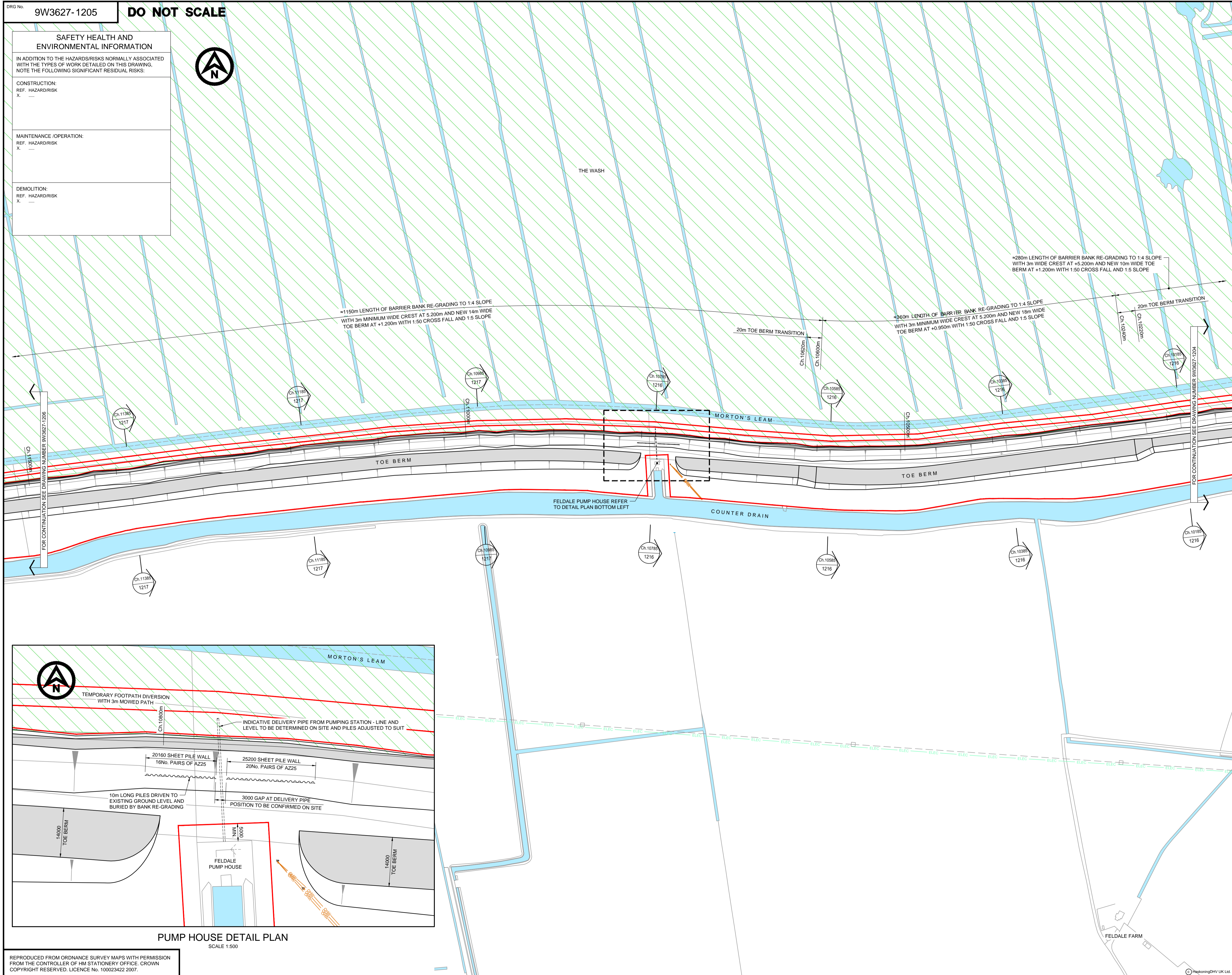
SAFETY HEALTH AND ENVIRONMENTAL INFORMATION

IN ADDITION TO THE HAZARDS/RISKS NORMALLY ASSOCIATED WITH THE TYPES OF WORK DETAILED ON THIS DRAWING, NOTE THE FOLLOWING SIGNIFICANT RESIDUAL RISKS:

CONSTRUCTION:
REF. HAZARD/RISK
X.

MAINTENANCE / OPERATION:
REF. HAZARD/RISK
X.

DEMOLITION:
REF. HAZARD/RISK
X.



- NOTES**
1. ALL DIMENSIONS ARE IN MILLIMETRES UNLESS NOTED OTHERWISE.
 2. ALL LEVELS ARE IN METRES RELATIVE TO ORDNANCE DATUM NEWLYN.
 3. ALL COORDINATES IN METRES RELATIVE TO ORDNANCE SURVEY NATIONAL GRID.
 4. ALL MATERIALS AND WORKMANSHIP WILL BE DEFINED IN THE SPECIFICATION UNLESS NOTED OTHERWISE.
 5. BURIED SERVICE POSITIONS: SERVICE INFORMATION ON THIS DRAWING HAS BEEN OBTAINED FROM STATUTORY RECORDS FROM THE RELEVANT SERVICE PROVIDER. IN ADDITION AREAS HAVE BEEN SURVEYED USING GPR AND CARRIED OUT BY ZETICA LTD. DURING MARCH 2013. THE CONTRACTOR IS TO ARRANGE FOR THEIR OWN SERVICES INVESTIGATION WORKS PRIOR TO COMMENCING CONSTRUCTION IN EACH AREA.

- LEGEND**
- SECTION NUMBER / CHAINAGE
DRAWING REFERENCE NUMBER
 - EXISTING WATER COURSE / DRAIN
 - NENE WASHES DESIGNATED SITE (RAMSAR, SAC, SPA, SSSI)
 - SITE BOUNDARY / WORKING AREA
 - SETTING OUT POINT
- ZETICA SURVEY DATA**
- GAS FROM SURVEY
 - GAS FROM STAT RECORDS
 - WATER FROM SURVEY
 - WATER FROM STAT RECORDS
 - ELECTRIC FROM SURVEY
 - FOUL SEWER FROM STAT RECORDS
 - OVERHEAD POWER LINE FROM SURVEY
 - COMMUNICATIONS FROM SURVEY
 - DERIVED FROM GPR SURVEY
 - UNKNOWN UTILITY FROM SURVEY
- BRITISH TELECOM RECORDS**
- BT UNDERGROUND
 - BT OVERHEAD CABLE
- UK POWER NETWORK RECORDS**
- POWER NETWORK

- REFERENCE DRAWINGS:**
- 9W3627-1200 YEAR 2+ WORKS, KEY PLAN
 - 9W3627-1201 YEAR 2+ WORKS, G.A., SHEET 1 OF 6
 - 9W3627-1202 YEAR 2+ WORKS, G.A., SHEET 2 OF 6
 - 9W3627-1203 YEAR 2+ WORKS, G.A., SHEET 3 OF 6
 - 9W3627-1204 YEAR 2+ WORKS, G.A., SHEET 4 OF 6
 - 9W3627-1206 YEAR 2+ WORKS, G.A., SHEET 6 OF 6

UNFINISHED DRAWING

D1	28.10.13	ISSUED TO INTERNAL DRAINAGE BOARD FOR INFORMATION	AW	HA	-
REV	DATE	DESCRIPTION	BY	CHK	APP

REVISIONS

CLIENT

PROJECT

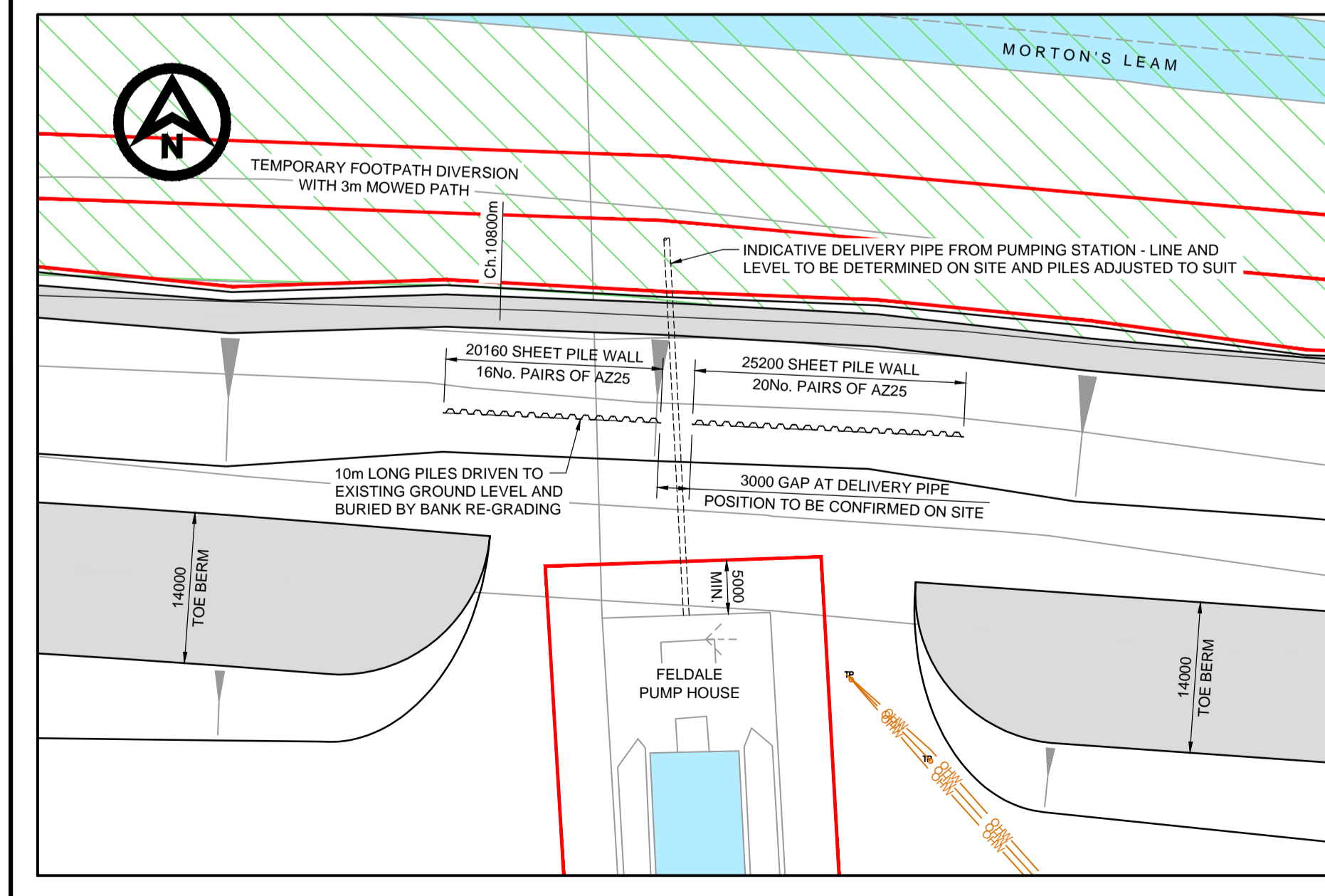
RESERVOIRS WHITTLESEY WASHES PMF WORKS

TITLE

**YEAR 2+ WORKS
POPLAR HOUSE TO BASSENHALLY
GENERAL ARRANGEMENT
SHEET 5 OF 6**

Rightwell House, Broomfield, Peterborough, PE3 8DW
Tel: +44(0)1733 334455
Email: info.peterborough@rh-dhv.com
Website: www.royalhaskoning.com

DRAWN	AW	CHECKED	HA	APPROVED	
DATE	AUG '13	SCALE	AT A1	1:2000	REF: 9W3627-1205.dwg
DRAWING No.	9W3627-1205			REVISION	D1



REPRODUCED FROM ORDNANCE SURVEY MAPS WITH PERMISSION FROM THE CONTROLLER OF HM STATIONERY OFFICE. CROWN COPYRIGHT RESERVED. LICENCE No. 100023422 2007.